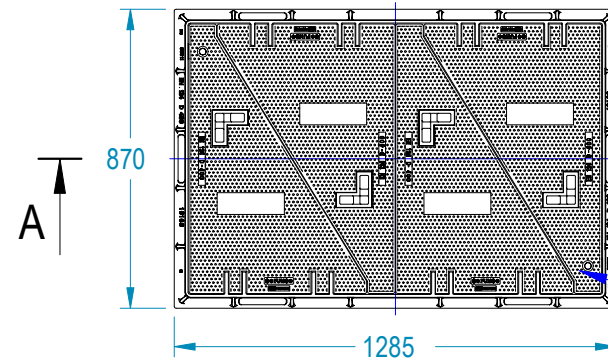
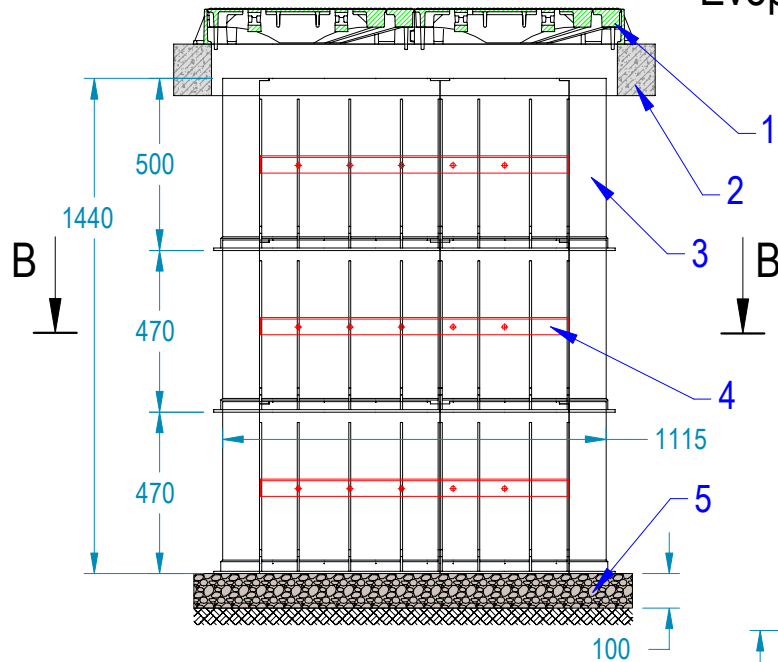
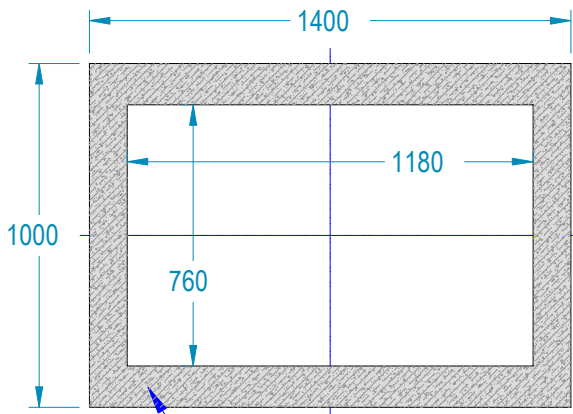


# Evopipes RADBOX 975x600

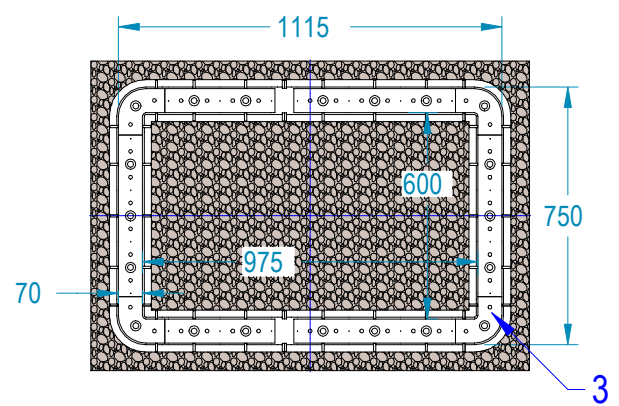


D400 (EN 124-2)  
Weight - 203.2 kg



No.	Part	Description	Pcs.
1	Chamber cover	D400	1
2	Support ring	Reinforced concrete	1
3	Metal beam	Attached to the chamber walls profile thickness 5 mm	
4	Radbox wall assembly	h=500 mm	3
5	Chipped embankment	Dolomite chips (fraction size 20-40 mm)	1

## B-B



**NOTES:**

- The height can be adjusted by installing additional Radbox wall risers 500 (actual size 470mm) or 150 mm.
- The construction of the Radbox shall be carried out in accordance with EN 13598-2.
- The Radbox can be fitted with a 12 mm thick base screwed to the walls (the base does not ensure airtightness).
- Cable supports are available on request and can be mounted on the walls.

This drawing is the intellectual property of Evopipes SIA



SIA "EVOPIPES"  
Langervaldes street 2a, Jelgava, LV-3002, Latvia  
Reg. No.: 50003728871  
Phone: +371 63094300  
e-mail: [info@evopipes.lv](mailto:info@evopipes.lv)  
Homepage: [www.evopipes.com](http://www.evopipes.com)

FILE NAME:  
Radbox975x600.dwg

PAGE: 1 OF 1

PAGE FORMAT: @ A4

SCALE:  
NO SCALE

TYPE:  
STANDARD DRAWING