



ELECTROFUSION ELBOW 90° WITH BRASS TRANSITION SDR 11



water
16 bar



gas
10 bar



hydrogen
10 bar



PE 100-RC
material

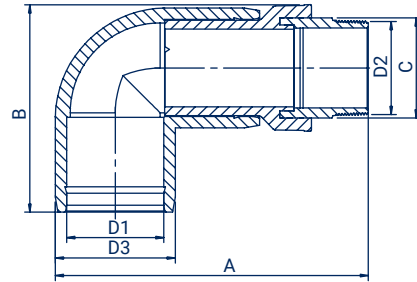


MRS 10 MPa



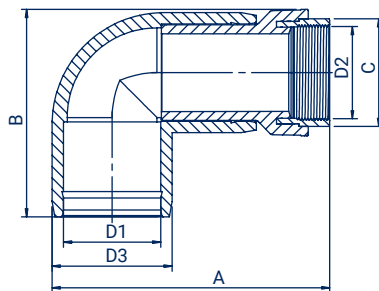
threads according
to EN10266-1

MALE THREAD |



Size D1/D2 (mm)	Code	C (mm)	D3 (mm)	A (mm)	B (mm)	Weight (kg)	Packing
20 x 1/2"	KGZ90020012	22	34	126	81	0,15	36
25 x 3/4"	KGZ90025034	28	35	129	85	0,14	30
32 x 1"	KGZ90032001	34	43	146	88	0,24	20
40 x 1"	KGZ90040001	34	52	160	94	0,30	12
40 x 1 1/4"	KGZ90040114	44	52	166	99	0,39	12
50 x 1 1/2"	KGZ90050112	49	62	186	108	0,51	8
63 x 2"	KGZ90063002	61	80	220	127	0,96	14
75 x 2 1/2"	KGZ90075212	76	95	254	162	1,46	8
90 x 3"	KGZ90090003	88	112	288	180	2,17	6
110 x 4"	KGZ90110004	114	135	332	203	3,45	4
125 x 4"	KGZ90125004	114	151	348	225	3,99	3

FEMALE THREAD |



Size D1/D2 (mm)	Code	C (mm)	D3 (mm)	A (mm)	B (mm)	Weight (kg)	Packing
20 x 1/2"	KGW90020012	26	34	114	81	0,14	40
25 x 3/4"	KGW90025034	32	35	116	85	0,15	30
32 x 1"	KGW90032001	40	43	127	88	0,21	25
40 x 1"	KGW90040001	40	52	141	94	0,26	15
40 x 1 1/4"	KGW90040114	48	52	149	99	0,31	14
50 x 1 1/2"	KGW90050112	55	62	166	108	0,43	12
63 x 2"	KGW90063002	67	80	196	127	0,70	14
75 x 2 1/2"	KGW90075212	83	95	226	162	1,15	8
90 x 3"	KGW90090003	96	112	260	180	1,79	8
110 x 4"	KGW90110004	122	135	296	203	2,60	5
125 x 4"	KGW90125004	122	151	312	225	3,14	4