



# SPIGOT ELBOW 90°

## SDR 11



water  
16 bar



gas  
10 bar



hydrogen  
10 bar



PE 100-RC  
material



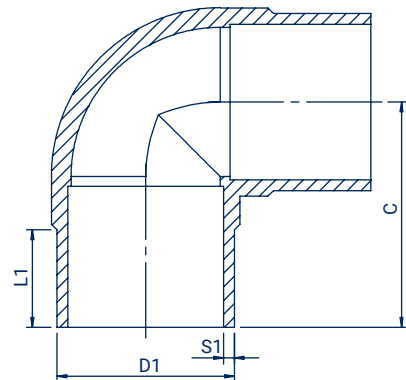
MRS 10 MPa



butt  
welding



electrofusion  
welding



Size D1 (mm)	Code	L1 (mm)	C (mm)	S1 (mm)	Weight (kg)	Packing
25	KD9002511	43	69	2,3	0,02	-
32	KD9003211	47	79	3	0,04	150
40	KD9004011	52	93	3,7	0,08	-
50	KD9005011	59	109	4,6	0,14	-
63	KD9006311	67	130	5,8	0,26	-
75	KD9007511	75	150	6,8	0,42	-
90	KD9009011	81	131	8,2	0,53	16
110	KD9011011	95	210	10	1,29	6
125	KD9012511	93	163	11,4	1,32	6
140	KD9014011	120	200	12,7	2,28	5
160	KD9016011	101	190	14,6	2,47	6
180	KD9018011	112	212	16,4	3,59	4
200	KD9020011	121	233	18,2	4,89	2
225	KD9022511	125	251	20,5	6,40	2
250	KD9025011	135	275	22,7	8,85	1
280	KD9028011	146	303	25,4	12,14	1
315	KD9031511	157	335	28,6	16,81	1