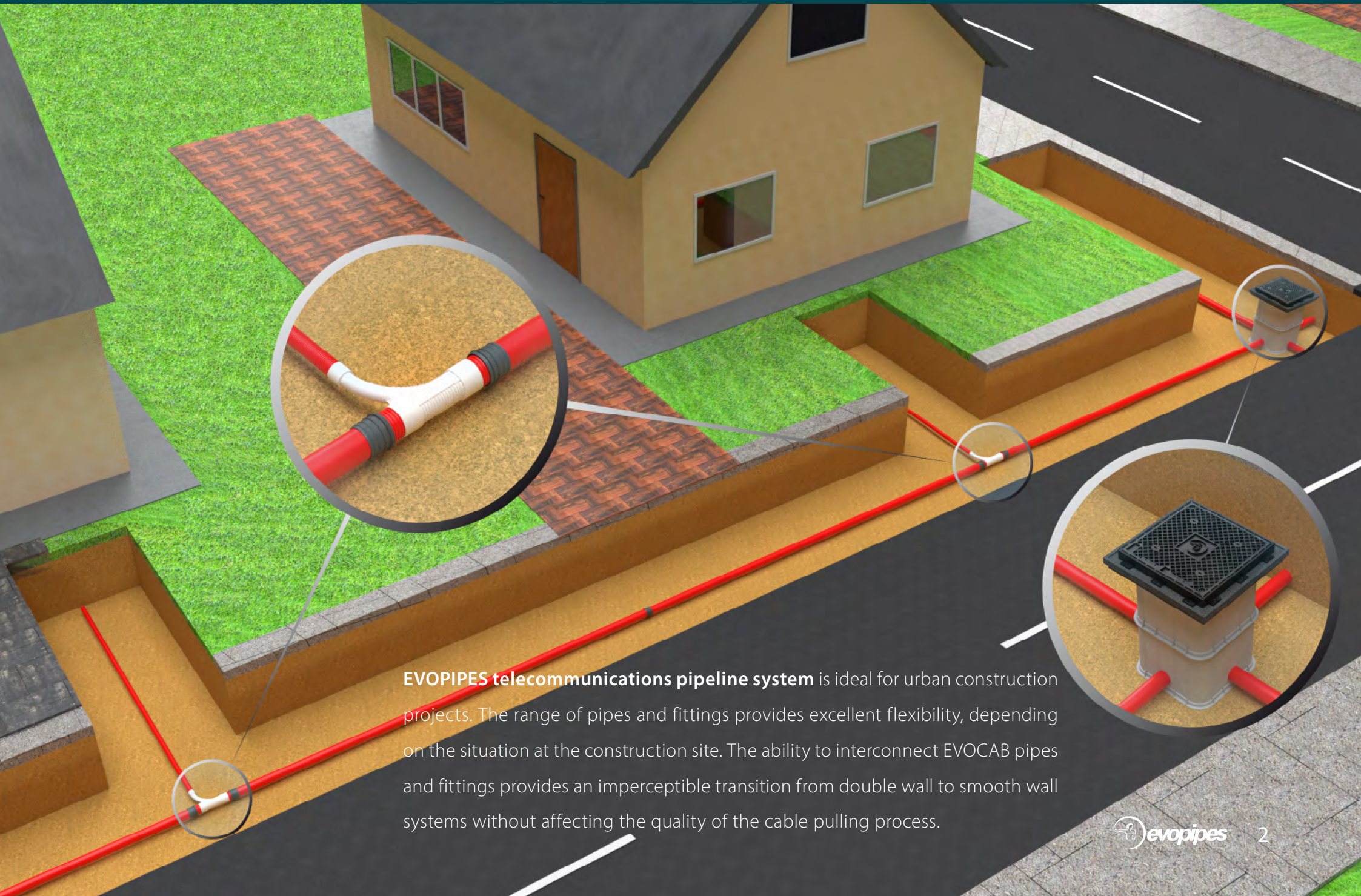




TELECOMMUNICATIONS INFRASTRUCTURE SOLUTIONS



PIPES, ACCESSORIES, CHAMBERS



EVOPIPES telecommunications pipeline system is ideal for urban construction projects. The range of pipes and fittings provides excellent flexibility, depending on the situation at the construction site. The ability to interconnect EVOCAB pipes and fittings provides an imperceptible transition from double wall to smooth wall systems without affecting the quality of the cable pulling process.

**RIGID MULTI PP N750**

RIGID MULTI PP N750 3-layer pipe made from polypropylene with compression strength 750 [N/20cm].

Conformity: **EN 61386-1, EN 61386-24**

Material: **polypropylene (PP)**

Compression strength class: **750**

Impact resistance: **N**

DN/OD: **110 mm**

Length: **6 m**

Colour: **red and yellow** (on stock)

(other colours on request)

Code: 3070011006004C08043 (DN/OD 110 mm) (red)

2073011006005C08043 (DN/OD 110 mm) (yellow)

Seal Lock system

The new pipe connection system uses a rubber sealing ring perfectly secured by a lock ring. The system ensures the stability of the sealing ring and prevents the possibility of twisting and moving of the sealing ring, as well as other possible damage during the assembly process.



You can find information about product codes, order quantities, and other information www.evopipes.com

Go to www.evopipes.com





EVOCAB HARD N750



EVOCAB HARD - double wall cable protection pipes with a corrugated outside and smooth inside.

Conformity: **EN 61386-1, EN 61386-24**

Material: **polyethylene (HDPE)**

Compression strength class: **750**

Impact resistance: **N**

DN/OD: **63, 110 mm**

Colour: **red and yellow** (on stock)

(other colours on request)

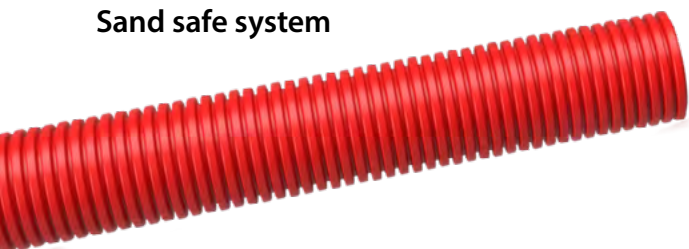
Code: 2020006306004C01003 (DN/OD 63 mm) (red)

2020011006004C01003 (DN/OD 110 mm) (red)

2020006306005C01003 (DN/OD 63 mm) (yellow)

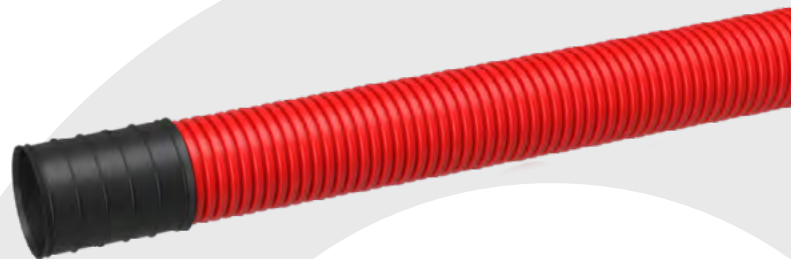
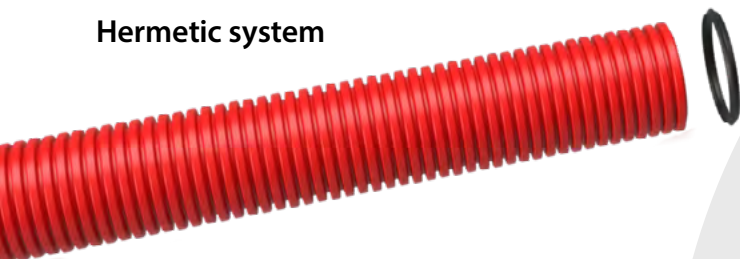
2020011006005C01003 (DN/OD 110 mm) (yellow)

Sand safe system



The type of connection protects cables from sand and provides mechanical protection.

Hermetic system



The type of connection ensures system tightness (up to 0.5 bar) due to the sealing ring in connection coupler.

You can find information about product codes, order quantities, and other information www.evopipes.com

Go to www.evopipes.com





MICRODUCT pipes



FTTx - optical fibre from source to endpoint. The microduct system can provide fibre blowing in every imaginable solutions.

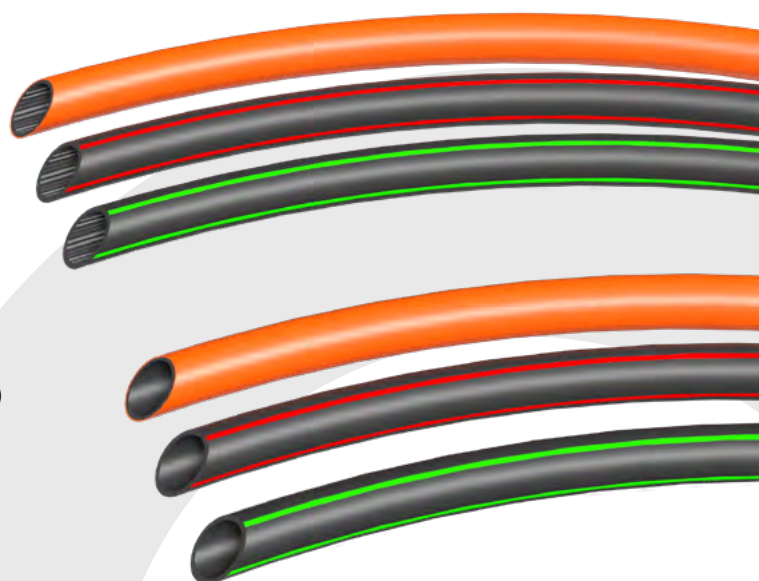
Our pipes can hold 1 -24 micropipes We offer a variety of shell and pipeline materials suitable for installation in an existing pipe, laying in the ground, tunnels, indoor buildings, as well as for adapting the solution to customer specific needs.

Go to www.evopipes.com



EVODUCT GROOVE

EVODUCT STANDARD



Go to www.evopipes.com



EVODUCT main backbone pipes are used for construction of fiber optic communications and other cables using traditional installation methods.

Conformity: **EN 61386-1, EN 61386-24**

Material: **polyethylene (HDPE)**

Compression strength class: **750 or 1250**

SDR: **11**

Impact resistance: **N**

DN/OD: **25, 32, 40, 50, 63, 75*, 90*, 110* mm**

Colour: **orange** (any other colour combination - on request)

**on request*

You can find information about product codes, order quantities, and other information www.evopipes.com



EVOCAB SPLIT



EVOCAB SPLIT is a lock/unlock pipe solution with an integrated connection system and clamps that provides quick and easy connection of pipes without tools. Ideal for protecting existing cable lines, protecting temporary communications, or protecting crossing points. A moving and towing-resistant socket provides an ideal connection to ensure that the entire line remains fully protected, even in large distances, temperature changing conditions and line curves.

Impact resistance: **N**

Compression strength class: **450, 750 or 1250**

Go to www.evopipes.com



You can find information about product codes, order quantities, and other information www.evopipes.com

The SPLIT BOX is particularly suitable for protecting existing cables in sharp turns. This accessory together with EVOCAB SPLIT pipes can fully ensure the protection of existing cables, not only in construction processes, but in permanent cable line as well.

Code: 80328910900000Z000

SPLIT BOX



Go to www.evopipes.com





Reduction branch 110/63

In the construction of new telecommunications networks or in the event of network expansion, a ideal solution for connecting consumers. The curvature radius of reduction branch allows to connect consumer to the network without using cable chambers, thereby reducing investment and ensuring tightness. Perfectly compatible with both EVOCAB HARD and RIGID MULTI.

EVOCAB HARD
DN/OD 63 mm

EVOCAB HARD
DN/OD 110 mm

RIGID MULTI N 750
DN/OD 110 mm

Reduction branch 110/63 mm
for connecting consumers

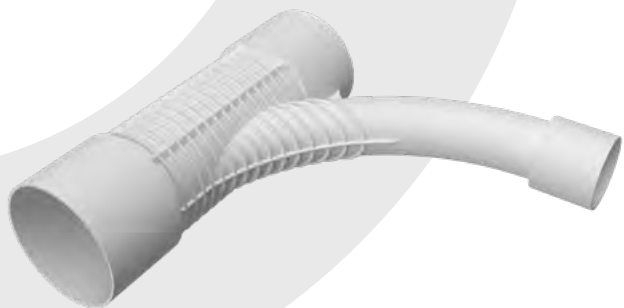
EVOCAB HARD
DN/OD 110 mm

Transiton for
RIGID MULTI N750 system

RIGID MULTI N750
DN/OD 110 mm



Reduction branch 110/63



Reduction branch for creating consumer connections. The accessory is perfectly suitable with EVOCAB HARD and RIGID MULTI pipe systems in situations where a branch on a cable line is required.

Pipeline: **DN/OD 110 mm**

Connection: **DN/OD 63 mm**

Code: 8010381630000H0000

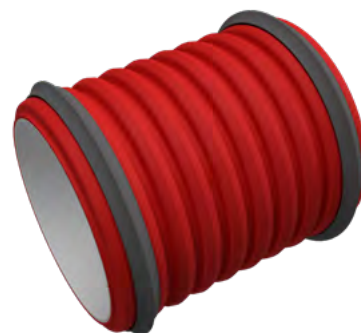
The transition shall be used in situations where it is necessary to connect the reduction branch 110/63 to the RIGID MULTI pipe system. Rubber sealing rings will ensure the tightness of the system (up to 0.5 bar).

DN/OD: **110 mm**

Code: on request



Transition to RIGID MULTI system



Double socket



Depending on configuration, the universal double sleeve is ideal for transition of EVOCAB HARD pipes to RIGID MULTI N750 pipe systems. The Seal Lock system provides all of the above options through a single piece.

Code: 825015110000000299 (*double socket*)

825842110000000200 (*sealing rings*)



RIGID MULTI elbow

RIGID MULTI pipe elbows provide the creation of cable line turns without causing difficulties in the cable pulling process and without infringing the maximum permissible curvature radius of cables. Joining pipes with elbows - using RIGID MULTI pipe sockets and double sockets.

DN/OD: 110 mm

Bend: 11°, 15°, 22.5°, 30°, 45°, 90°

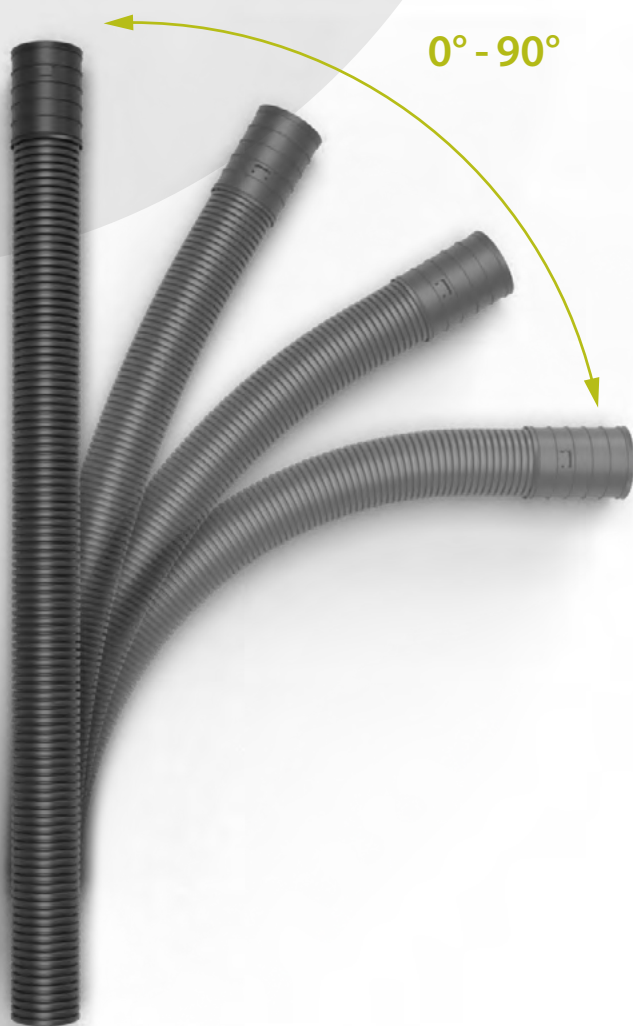
Code: on request (11°)
on request (15°)
on request (22.5°)
on request (30°)
on request (45°)
on request (90°)



DN 110 mm pliable elbows

Pliable elbow for all pipe (rigid and corrugated, using Seal Lock double sockets) turns. Pliable elbow enables any cable line turns in the range 0 ° to 90 °.

EVOCAB HARD - for non-hermetic system

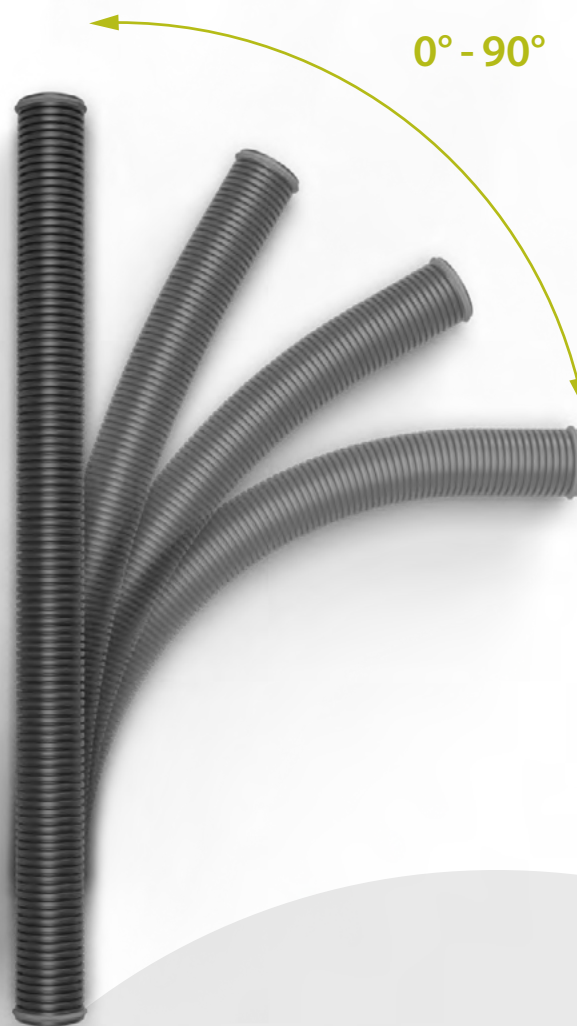


The elbow of the **EVOCAB HARD** system is equipped with a double socket for connecting to pipes and protects the pipe system from entering the sand.

Elbow: **DN/OD 110 mm**

Code: 803010110M100D0000

RIGID MULTI / EVOCAB HARD - for hermetic system



RIGID MULTI / EVOCAB HARD system elbow is equipped with rubber sealing rings for connecting to pipes. The connection is hermetic.

Elbow: **DN/OD 110 mm**

Code: on request

Go to www.evopipes.com





Pipe spacers



Spacers for installing EVOCAB pipes in a trench. Spacers are ideal for easy organization of pipes during the construction process. In the standard set, spacers are available with 8 pipe holders, but those are easy to adjust and modify according to the situation.

Pipe DN/OD: **110 mm**

Holes for pipes: **8**

Code: 803033110004000000

Go to www.evopipes.com



Cable connection chamber made of polypropylene (PP). A square base (1000 x 1000 mm) provides safe anchoring in the ground. Designed for construction in low traffic load zones, such as pedestrian areas, bicycle lanes, car parks, green areas, etc.

Go to www.evopipes.com



TC 906.800.650



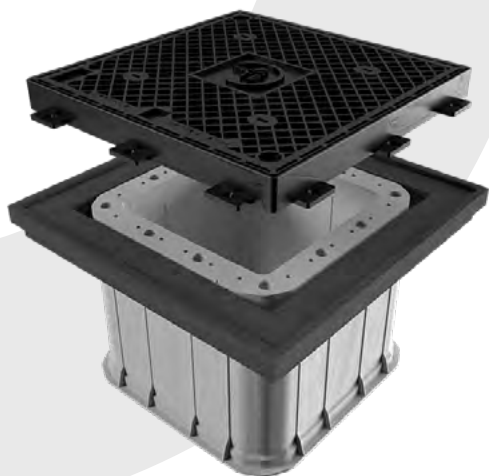
TC 900.700.450



Optical cable connection chamber with waterproof cover for underground installations. Ideal for various cable systems such as optical cable lines, telecommunications lines for railway signalling systems, etc. The chamber is easy to install and the diameter of access (700 mm) provides a wide working space.

Go to www.evopipes.com



**RADBOX 450/450**

Modular cable connection chamber. The available range of chambers offers extensive construction and application opportunities.

The design of the RADBOX chamber and the wide opening of the cover allow easy access and convenience servicing of the cable system, and easy installation of new additional cables for further development of the system as well.

Inner dimensions: **450 x 450 mm**

Outer dimensions: **590 x 590 mm**

Chamber cover: **B125, C250, D400**

Go to www.evopipes.com

**RADBOX 600/600**

Modular cable connection chamber. The double wall of the chamber offers excellent mechanical protection and impact resistance.

The design of the RADBOX chamber and the wide opening of the cover allow easy access and convenience servicing of the cable system, and easy installation of new additional cables for further development of the system as well.

Go to www.evopipes.com



Inner dimensions: **600 x 600 mm**

Outer dimensions: **740 x 740 mm**

Chamber cover: **D400**

RADBOX 975/600

Modular cable connection chamber. The rectangular opening provides a wide working space inside the chamber.

The design of the RADBOX chamber and the wide opening of the cover allow easy access and convenience servicing of the cable system, and easy installation of new additional cables for further development of the system as well.

Inner dimensions: **975 x 600 mm**

Outer dimensions: **1180 x 740 mm**

Chamber cover: **D400**

Go to www.evopipes.com





RADBOX installation

Modular panels allows quickly and easily create the required height of the chamber on the spot at the construction site. Immediate load strength after assembling, ensures a rapid, simple and convenient construction process. The creation of cable pipe openings is possible on-site using a hole saw. Radbox chamber shall be built on a draining material base that provides water filtration. No lifting technique is required in the construction process. The RADBOX modular design allows the chambers to be installed on an existing cable line when there is a need for the system operator to perform expansion or branching works.





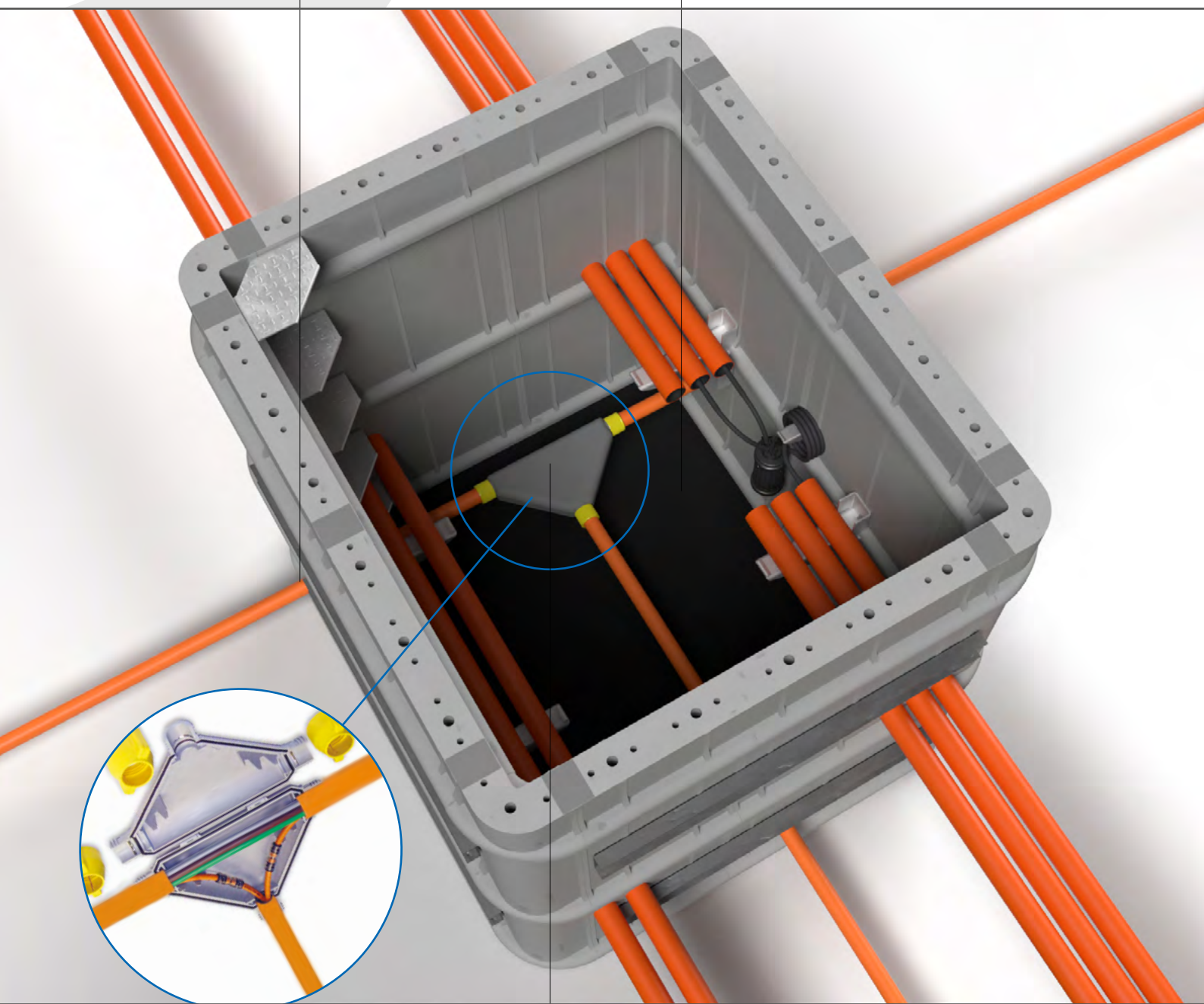
RADBOX installation

Connections

Connections are easy to install by using a hole saw.

Floor

In the standard set Radbox chamber is installed with or without a floor.



Cable accessories

Microtube connections are easy to install and can be reused.



RADBOX installation

Steps

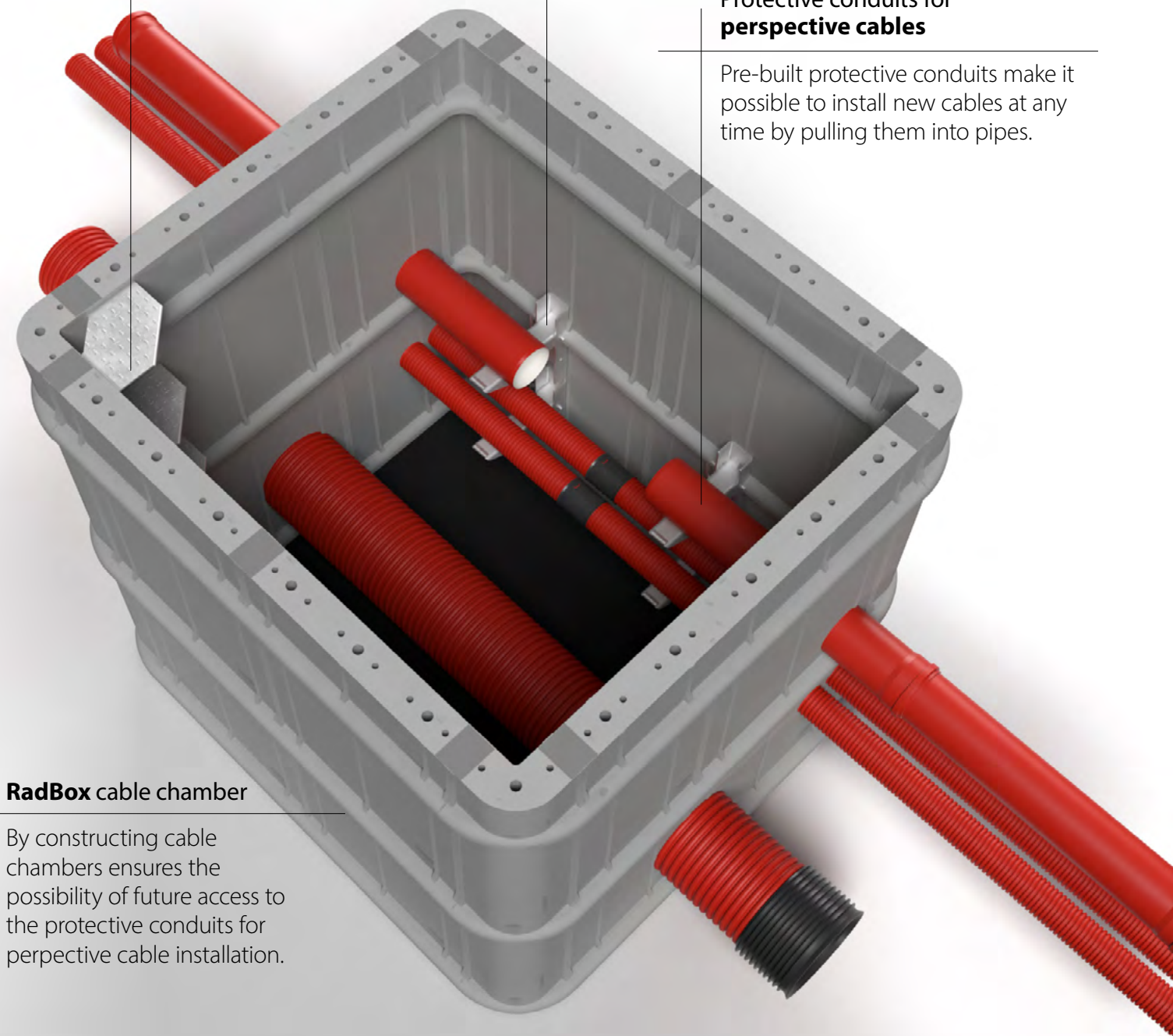
Separately installed steps ensure convenient and safe access to cables.

Cable bearer

Cable bearer mounted on the chamber wall provide stable support for connections.

Protective conduits for perspective cables

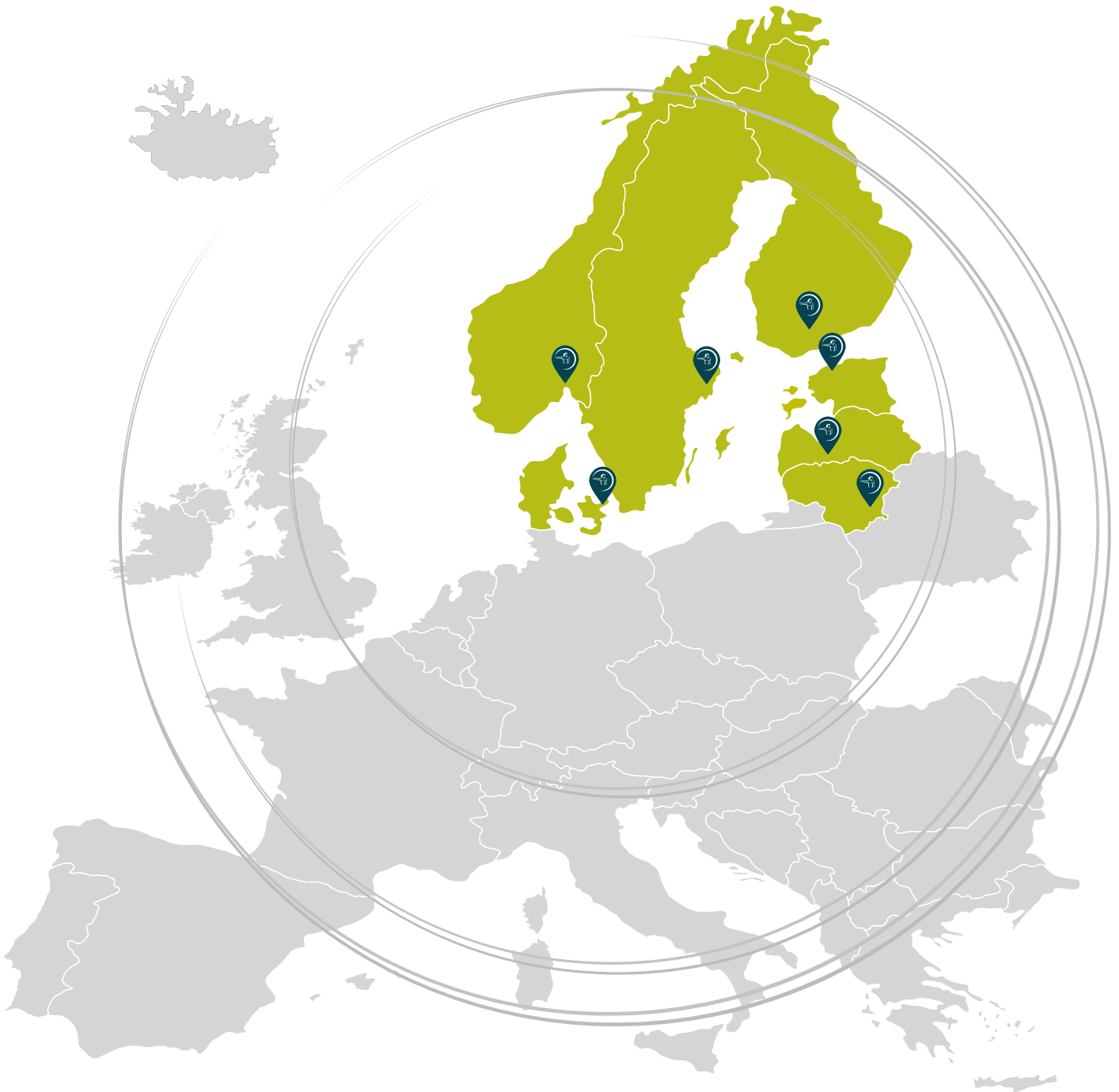
Pre-built protective conduits make it possible to install new cables at any time by pulling them into pipes.



RadBox cable chamber

By constructing cable chambers ensures the possibility of future access to the protective conduits for perspective cable installation.

Telecommunications infrastructure solutions.



SIA "EVOPIPES"

Adress: Langervaldes street 2a,

Jelgava, LV-3002, Latvia

Phone: +371 630-943-00

info@evopipes.lv

www.evopipes.lv/en/contacts