

TECHNICAL DATA SHEET

REDUCTION BRANCH 110/63 mm

For connection to the main cable network

Conformity:
EN 61386-1
EN 61386-24



PRODUCT DESCRIPTION

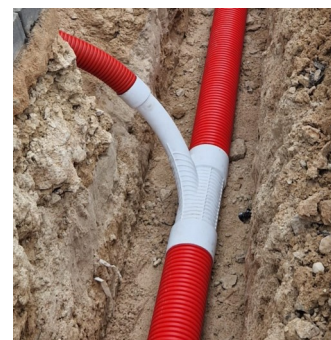
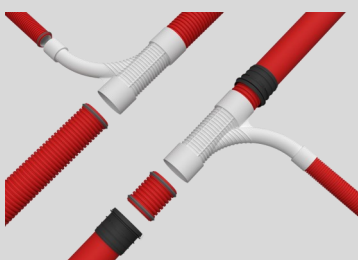
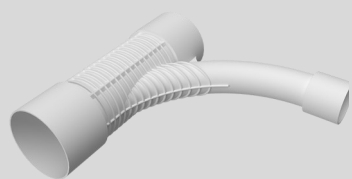
Reduction branch with main line DN/DO 110 mm, connection DN/OD 63 mm. It is perfectly suitable in situations where a branch on a cable line is required. The accessory ensures a watertight connection (up to 0.5 bar). Reduction branch is compatible with the following systems:

- EVOCAB HARD system
- RIGID MULTI PP N750 system (must be used together with transition)

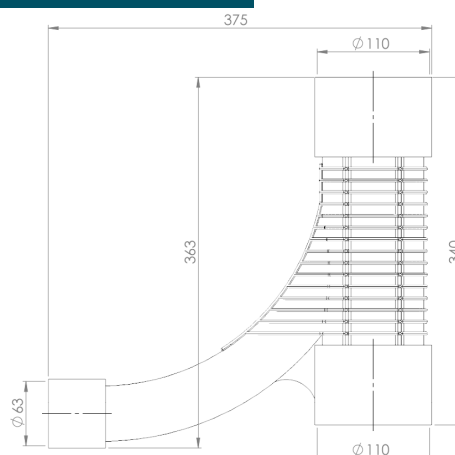
APPLICATION AREA

An ideal solution for connecting consumers in the construction process of new cable networks and cable network expansion.

The curvature radius of reduction branch allows to connect consumer to the network without using cable chambers, thereby reducing investment and ensuring tightness.



PRODUCT DIMENSIONS



Open product

PRODUCT PARAMETERS

Parameter	Value
Material	Polypropylene (PP)