

Access Chambers Systems



RADIUS
Systems

About us



With three manufacturing facilities in the UK, a global distribution network and over 300 employees, we are proud to supply over 100 countries.

Radius ducting and access chambers are sold to telecoms operators, power, water and gas utilities, highways operators and rails networks.

Quality

We are committed to the highest levels of quality for the design, manufacturing, performance, durability and delivery of our products and we aim to provide outstanding service quality.

We source the best materials and we use modern and efficient manufacturing, inspection and testing methods and maintain an effective Quality Management System in the form of ISO 9001:2008.

Throughout our workforce, we emphasise and communicate the importance of customer care, timeliness of deliveries, courtesy, consistency, accuracy and fast response to all areas of service.

We promote a customer focused culture that is underpinned by encouraging employees to be actively involved in the continual improvement of our products, systems and processes.

Radius Systems has manufactured and supplied polyethylene pipe systems to major utilities around the world since 1969 and to telecoms companies since 1988

Technical Support

We take pride in developing innovative yet cost effective solutions for all tubing requirements and having long-lasting partnerships.

We strive to work closely with our partners in terms of technical support, training, product development and supply chain services to ensure that we provide the best tailored solutions.

Our expert team of engineers offer a design and development service for new products and the optimisation of existing products and we provide full technical field service backup for our products.

Environment

As a manufacturer we take our environmental responsibilities very seriously and we work in-house and in partnership with suppliers to reduce carbon emissions across the whole supply chain.

Health & Safety

The health and safety of operatives and individuals involved in the processing, handling, jointing, installation, testing and use of polyethylene pipe systems is at all times of paramount importance to Radius Systems.

In addition to compliance with BS OHSAS 18001:2007 for the manufacture of polyethylene and PVC pipes and fittings for telecoms, gas, water and industrial applications, we also adhere to good working practices across our whole business which is essential to achieve the high standards that we and our customers expect.

Why use Radius access chambers?

Radius manufactures high quality preformed access chambers for use in utilities and civil engineering applications.

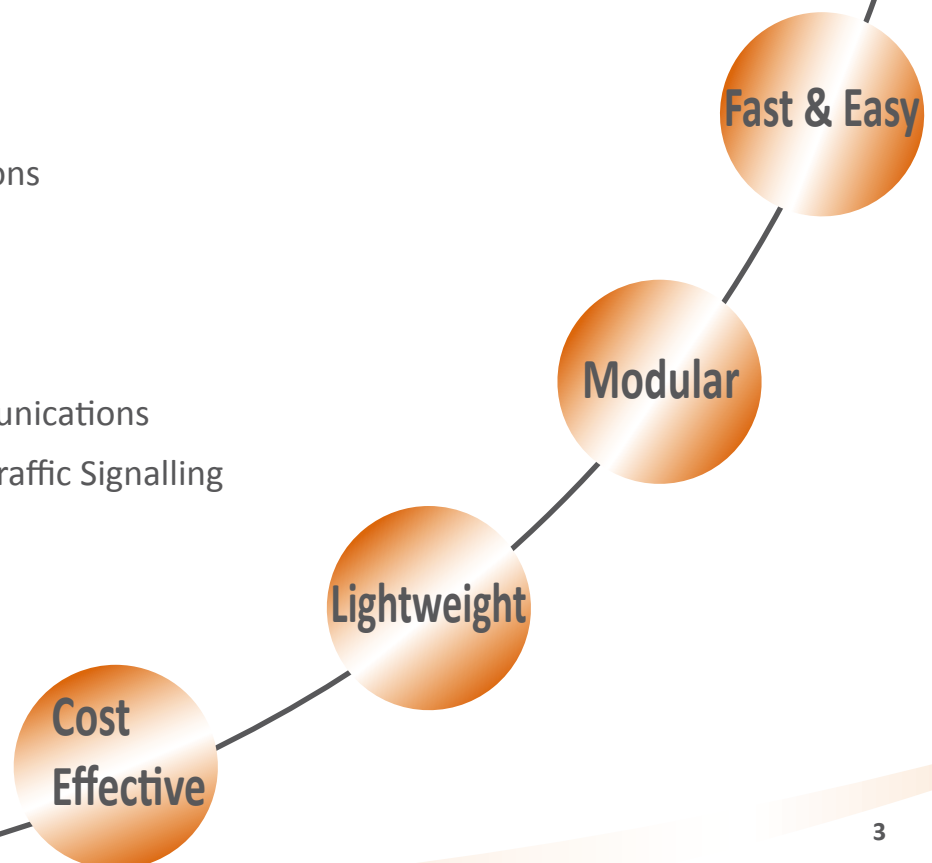
Our products are the ideal alternative for concrete and brick-built chambers providing fast, easy and cost effective installation.

We offer two types of modular composite chambers:

- **QuadBox®**, a stackable segmental system ideally suited to telecoms networks.
- **RadBox®**, a versatile and fully modular interlocking panels and corners system, for use in any type of civil engineering project.

Applications

- Telecommunications
- Electricity
- Water
- Gas
- Motorway Communications
- Street Lighting / Traffic Signalling
- Rail



QuadBox Access Chamber

A robust preformed underground access chamber system offering fast and easy installation.

A lightweight stacking system made from 150mm high ring sections, QuadBox offers great depth versatility.



BENEFITS

- Single visit installation
- Five sizes
- Units stack to required depth
- Suitable for use in congested networks
- User friendly, simple construction
- Lightweight — no lifting equipment
- Excellent built-in strength and stiffness
- Duct entry drill guides
- No concrete backfill
- Easy fit furniture
- Excellent chemical and weathering resistance
- No site material waste
- BT approved for use in its national networks

UP TO
40T
TOP LOAD

QuadBox®



Material

Foamed High Density Polyethylene (HDPE)
Twin wall for excellent strength and stiffness

Type

A stackable interlocking ring system, 150mm high sections

Top Load Rating

Up to 40t depending on size, see table below

Applications

- Suitable for all types of direct buried networks and utilities
- Ideal for new build and retrofit
- Approved by British Telecom
- House building

Dimensions

Clear openings

Length (mm)	Width (mm)	BT Type	Top Load	Pallet Qty	Product Code
300	300	-	12.5t	52	UY0000
600	450	-	12.5t	20	UY0001
725	255	BT 2	25t	37	UY0002
915	445	BT 4	40t	26	UY0003
1310	610	BT 6	40t	14	UY0004

Options

- Pre-cut duct entries
- Prefitted furniture
- Prefitted floor

Health & Safety

SAFE
WEIGHT

Lifting Weights

The chambers are lightweight with the heaviest section weighing less than 20kg. This complies with current European manual handling best practice guidelines and removes the need for lifting equipment.

Dust and Vibration

Duct entries are cut with a standard holesaw and the chamber material, being inert, presents no health risk to operatives or members of the public.

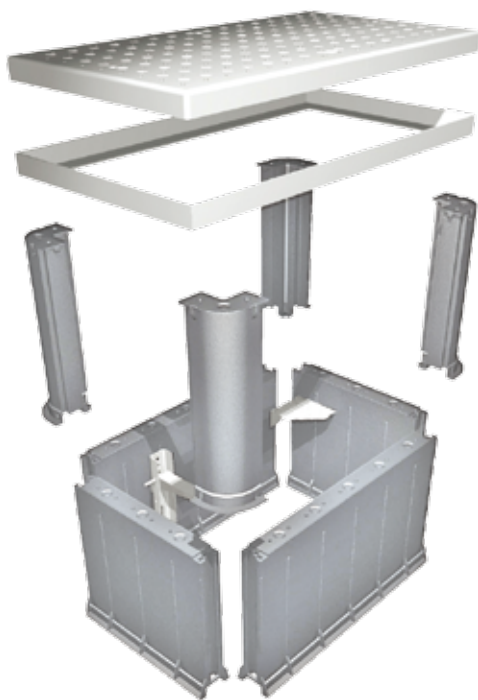
Chemicals

Preformed chambers reduce exposure to concrete and other on-site chemicals.

RadBox Access Chamber

A high performance preformed underground access chamber for use in any non-carriageway civil engineering project.

It is a fully modular system comprised of interlocking panels and corners which fit together to create almost any size of chamber.



BENEFITS

- Single visit installation
- Create almost any size and depth combinations
- User friendly, simple construction
- Lightweight — no lifting equipment
- Flat pack
- Excellent built-in strength and stiffness
- No concrete backfill
- Duct entry drill guides
- Excellent chemical and weathering resistance
- No site material waste

UP TO
40T
TOP LOAD

RadBox®

Material

Foamed High Density Polyethylene (HDPE)
Twin wall for excellent strength and stiffness

Type

A fully modular system comprised of interlocking panels and corners which fit and stack together to create almost any size of chamber. A joint pin is used to create extended panel sizes.

Choice of 500mm and 150mm panel height

Top Load Rating

40t (12.5t for 600x600mm chambers and below)

Applications

- Suitable for all types of direct buried networks and utilities
- Ideal choice for projects with large or unusually sized chambers
- Up to 2 x 2 x 1.5m (d) without added engineering
- For larger chambers, please contact our sales team

Options

- Pre-cut duct entries
- Prefitted furniture
- Prefitted floor
- Delivered flat packed or fully assembled

Size Range

Any combination of the panel sizes below, up to 2 x 2 x 1.5m (d). Depth is achieved by stacking 500mm and/or 150mm segments. For larger chambers, please contact us.

Clear openings (mm)

Single Panels	450	600	750	900	1050																																																																																																																																																																																																																																																																																																																																																																																																																																																																																																																																																																																																																																																																																																																																																																																																																																																																																																																																																																																																																																																																																																																																																																																																																																																																																																																																																																																																																																																																																																																																																																																																																																																																																																																																															
---------------	-----	-----	-----	-----	------	--	--	--	--	--	--	--	--	--	--	--	--	--	--	--	--	--	--	--	--	--	--	--	--	--	--	--	--	--	--	--	--	--	--	--	--	--	--	--	--	--	--	--	--	--	--	--	--	--	--	--	--	--	--	--	--	--	--	--	--	--	--	--	--	--	--	--	--	--	--	--	--	--	--	--	--	--	--	--	--	--	--	--	--	--	--	--	--	--	--	--	--	--	--	--	--	--	--	--	--	--	--	--	--	--	--	--	--	--	--	--	--	--	--	--	--	--	--	--	--	--	--	--	--	--	--	--	--	--	--	--	--	--	--	--	--	--	--	--	--	--	--	--	--	--	--	--	--	--	--	--	--	--	--	--	--	--	--	--	--	--	--	--	--	--	--	--	--	--	--	--	--	--	--	--	--	--	--	--	--	--	--	--	--	--	--	--	--	--	--	--	--	--	--	--	--	--	--	--	--	--	--	--	--	--	--	--	--	--	--	--	--	--	--	--	--	--	--	--	--	--	--	--	--	--	--	--	--	--	--	--	--	--	--	--	--	--	--	--	--	--	--	--	--	--	--	--	--	--	--	--	--	--	--	--	--	--	--	--	--	--	--	--	--	--	--	--	--	--	--	--	--	--	--	--	--	--	--	--	--	--	--	--	--	--	--	--	--	--	--	--	--	--	--	--	--	--	--	--	--	--	--	--	--	--	--	--	--	--	--	--	--	--	--	--	--	--	--	--	--	--	--	--	--	--	--	--	--	--	--	--	--	--	--	--	--	--	--	--	--	--	--	--	--	--	--	--	--	--	--	--	--	--	--	--	--	--	--	--	--	--	--	--	--	--	--	--	--	--	--	--	--	--	--	--	--	--	--	--	--	--	--	--	--	--	--	--	--	--	--	--	--	--	--	--	--	--	--	--	--	--	--	--	--	--	--	--	--	--	--	--	--	--	--	--	--	--	--	--	--	--	--	--	--	--	--	--	--	--	--	--	--	--	--	--	--	--	--	--	--	--	--	--	--	--	--	--	--	--	--	--	--	--	--	--	--	--	--	--	--	--	--	--	--	--	--	--	--	--	--	--	--	--	--	--	--	--	--	--	--	--	--	--	--	--	--	--	--	--	--	--	--	--	--	--	--	--	--	--	--	--	--	--	--	--	--	--	--	--	--	--	--	--	--	--	--	--	--	--	--	--	--	--	--	--	--	--	--	--	--	--	--	--	--	--	--	--	--	--	--	--	--	--	--	--	--	--	--	--	--	--	--	--	--	--	--	--	--	--	--	--	--	--	--	--	--	--	--	--	--	--	--	--	--	--	--	--	--	--	--	--	--	--	--	--	--	--	--	--	--	--	--	--	--	--	--	--	--	--	--	--	--	--	--	--	--	--	--	--	--	--	--	--	--	--	--	--	--	--	--	--	--	--	--	--	--	--	--	--	--	--	--	--	--	--	--	--	--	--	--	--	--	--	--	--	--	--	--	--	--	--	--	--	--	--	--	--	--	--	--	--	--	--	--	--	--	--	--	--	--	--	--	--	--	--	--	--	--	--	--	--	--	--	--	--	--	--	--	--	--	--	--	--	--	--	--	--	--	--	--	--	--	--	--	--	--	--	--	--	--	--	--	--	--	--	--	--	--	--	--	--	--	--	--	--	--	--	--	--	--	--	--	--	--	--	--	--	--	--	--	--	--	--	--	--	--	--	--	--	--	--	--	--	--	--	--	--	--	--	--	--	--	--	--	--	--	--	--	--	--	--	--	--	--	--	--	--	--	--	--	--	--	--	--	--	--	--	--	--	--	--	--	--	--	--	--	--	--	--	--	--	--	--	--	--	--	--	--	--	--	--	--	--	--	--	--	--	--	--	--	--	--	--	--	--	--	--	--	--	--	--	--	--	--	--	--	--	--	--	--	--	--	--	--	--	--	--	--	--	--	--	--	--	--	--	--	--	--	--	--	--	--	--	--	--	--	--	--	--	--	--	--	--	--	--	--	--	--	--	--	--	--	--	--	--	--	--	--	--	--	--	--	--	--	--	--	--	--	--	--	--	--	--	--	--	--	--	--	--	--	--	--	--	--	--	--	--	--	--	--	--	--	--	--	--	--	--	--	--	--	--	--	--	--	--	--	--	--	--	--	--	--	--	--	--	--	--	--	--	--	--	--	--	--	--	--	--	--	--	--	--	--	--	--	--	--	--	--	--	--	--	--	--	--	--	--	--	--	--	--	--	--	--	--	--	--	--	--	--	--	--	--	--	--	--	--	--	--	--	--	--	--	--	--	--	--	--	--	--	--	--	--	--	--	--	--	--	--	--	--	--	--	--	--	--	--	--	--	--	--	--	--	--	--	--	--	--	--	--	--	--	--	--	--	--	--	--	--	--	--	--	--	--	--	--	--	--	--	--	--	--	--	--	--	--	--	--	--	--	--	--	--	--	--	--	--	--	--	--	--	--	--	--	--	--	--	--	--	--	--	--	--	--	--	--	--	--	--	--	--	--	--	--	--	--	--	--	--	--	--	--	--	--	--	--	--	--	--	--	--	--	--	--	--	--	--	--	--	--	--	--	--	--	--	--	--	--	--	--	--	--	--	--	--	--	--	--	--	--	--	--	--	--	--	--	--	--	--	--	--	--	--	--	--	--	--	--	--	--	--	--	--	--	--	--	--	--	--	--	--	--	--	--	--	--	--	--	--	--	--	--	--	--	--	--	--	--	--	--	--	--	--	--	--	--	--	--	--	--	--	--	--	--	--	--	--	--	--	--	--	--	--	--	--	--	--	--	--	--	--	--	--	--	--	--	--	--	--	--	--	--	--	--	--	--	--	--	--	--	--	--	--	--	--	--	--	--	--	--	--	--	--	--	--	--	--	--	--	--	--	--	--	--	--	--	--	--	--	--	--	--	--	--	--	--	--	--	--	--	--	--	--	--	--	--	--	--	--	--	--	--	--	--	--	--	--	--	--	--	--	--	--	--	--	--	--	--	--	--	--	--	--	--	--	--	--	--	--	--	--	--	--	--	--	--	--	--	--	--	--	--	--	--	--	--	--	--	--	--	--	--	--	--	--	--	--	--	--	--	--	--	--	--	--	--	--	--	--	--	--	--	--	--	--	--	--	--	--	--	--	--	--	--	--	--	--	--	--	--	--	--	--	--	--	--	--	--	--	--	--	--	--	--	--	--	--	--	--	--	--	--	--	--	--	--	--	--	--	--	--	--	--	--	--	--	--	--	--	--	--	--	--	--	--	--	--	--	--	--	--	--	--	--	--	--	--	--	--	--	--	--	--	--	--	--	--	--	--	--	--	--	--	--	--	--	--	--	--	--	--	--	--	--	--	--	--	--	--	--	--	--	--	--	--	--	--	--	--	--	--	--	--	--	--	--	--	--	--	--	--	--	--	--	--	--	--	--	--	--	--	--	--	--	--	--	--	--	--	--	--	--	--	--	--	--	--	--	--	--	--	--	--	--	--	--	--	--	--	--	--	--	--	--	--	--	--	--	--	--	--	--	--	--	--	--	--	--	--	--	--	--	--	--	--	--	--	--	--	--	--	--	--	--	--	--	--	--	--	--	--	--	--	--	--	--	--	--	--	--	--	--	--	--	--	--	--	--	--	--	--	--	--	--	--	--	--	--	--	--	--	--	--	--	--	--	--	--	--	--	--	--	--	--	--	--	--	--	--	--	--	--	--	--	--	--	--	--	--	--	--	--	--	--	--	--	--	--	--	--	--	--	--	--	--	--	--	--	--	--	--	--	--	--	--	--	--	--	--	--	--	--	--	--	--	--	--	--	--	--



Extended panels



Cross Joint Multichamber

Accessories



QuadBox 'Plug-in' Step

Galvanised to EN1461

Dimensions (mm)	Pack Qty	Product Code
150	10	UY0010

QuadBox 'Plug-in' Cable Bearer Kit

Incl. wall bracket (x 2), cable bearer (x 2) & locking pin (x 2)

Galvanised to EN1461

Length (mm)	Pack Qty	Product Code
242 (bearer)	2	UY0011



RadBox Step

Bolt-on type supplied with fixings

Dimensions (mm)	Pack Qty	Product Code
150	10	UY0388



RadBox Cable Bearer

Supplied with locking pin

Length (mm)	Pack Qty	Product Code
115	40	UY0357
165	30	UY0358
242	25	UY0359
343	10	UY0360
495	6	UY0361
648	6	UY0362

RadBox Wall Bracket

Bolt-on type, supplied with fixings

Length (mm)	Hole Positions	Pack Qty	Product Code
178	1	25	UY0384
278	2	10	UY0385
508	5	10	UY0379
813	9	8	UY0380
1270	15	6	UY0381
1575	19	4	UY0382
1880	23	4	UY0383



Plastic Floors

Standard style (can be supplied prefitted)
or "Drop-in" style



Frames and Covers

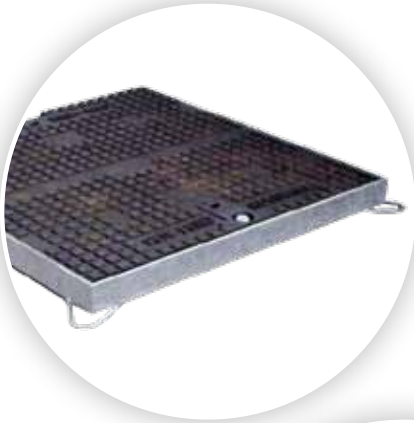
Radius offer a range of frames and covers in B125, C250 and D400 loading classes, including:

- Ductile iron
- Composite
- Concrete
- Recessed

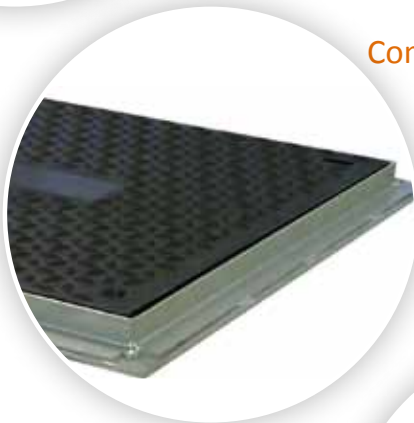
Please contact our sales team for further details.

Options

Locking
Raising frame
Badging
Security plates



Ductile F&C



Composite F&C



Concrete-Filled F&C



Recessed F&C

Specialist Chambers

In addition to our standard range, boxes can be customised to suit your requirements.

An example is the RadBox Minipillar chamber pictured below, developed and custom made to suit the requirements of the Irish utility, Electricity Supply Board.

The boxes are factory prepared to accommodate the customer's cabinet and have pre-cut duct entries ready for use.



ESB Approved Minipillar RadBox

Supplied partly assembled and mounted on pallet

Pre-cut knockout duct entries

Includes full mounting kit

900x750x800(d)mm



Have you got the complete set?



Download from www.radius telecoms.com



Connecting the world with innovative, high quality ducting, FTTx microtubing and access chambers systems for over 25 years.

Contact us to find out more:
t: +44 (0)28 4066 9999

Cable, Telecoms & Specials
Sales & Manufacturing
t: +44 (0)28 4066 9999
e: info@radius-systems.com

Radius Systems Ltd, Headquarters
t: +44 (0)1773 811112
www.radius-systems.com

www.radius telecoms.com



POLYPLASTIC GROUP

The content of this publication is for information only. Information in this publication is given in good faith and Radius Systems accepts no liability for its content. Information is correct at the time of going to press.