

TECHNICAL DATA SHEET



EVOAQUA PE100 water pressure pipes

Conformity:
EN 12201-2

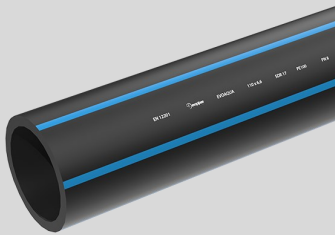
PRODUCT DESCRIPTION

EVOAQUA potable water pressure pipe are made of a high density polyethylene (PE100 type material). Featuring pipe pressure class of PN16 or PN10.

Material: HDPE (high density polyethylene) type PE 100

Colour: black with blue stripes.

Produced according to: EN 12201-2 specifications.



APPLICATION AREA

EVOAQUA pipes are designed for potable water pressure systems under conventional (traditional) construction- in open trench with bedding and filling according to EN 1610, EN 1046, EN 12007-2, EN 12327.



PRODUCT DIMENSIONS

Material: **PE100**

Pressure class: **PN16 / PN10**

SDR series: **11 / 17**

Pipe dimensions		Nominal D.	Length
OD x e, mm		DN/OD, mm	L, m
SDR 11	SDR 17		
20 x 2.0	-	20	100 .. 2000
25 x 2.3	25 x 1.8	25	100 .. 2000
32 x 3.0	32 x 2.0	32	100 .. 2000
40 x 3.7	40 x 2.4	40	100 .. 1000
50 x 4.6	50 x 3.0	50	100 .. 800

Open product

TECHNICAL DATA SHEET



EVOAQUA PE100 water pressure pipes

Conformity:
EN 12201-2

PRODUCT PARAMETERS

Parameter	Value	Test method
Material	PE100	
Hydrostatic pressure resistance (80 °C, 5 MPa)	>1000 h	EN ISO 1167-1 EN ISO 1167-2
Tensile elongation	>350%	EN ISO 6259-1
Resistance to crack growth (80 °C, 4 N/MPa, 2% Arkopal N-100)	>8760 h	ISO 16770
Resistance to slow crack growth (80 °C, 9.2 bar)	>8760 h	EN ISO 13479
Mass flow rate MFR (5 kg, 190 °C, 10 min)	0.25 ± 20%	EN ISO 1133
Oxidation induction time (200 °C)	≥20% min	ISO 11357-6
Longitudinal reversion (e _r ≤ 16 mm, 110 °C)	≤3%	EN ISO 2505
Chemical resistance	pH 2 ≥ pH ≥ pH 12	ISO/TR 10358

Nominal pressure according to EN12201-2 (with C=1,25 at temperature 20 °C) PN16 bar (SDR 11) or PN10 (SDR 17).

PRODUCT MARKING

Pipe marking

Aspect	Marking
Standard number	EN 12201
Manufacturers information	EVOPIPES
Product name	EVOAQUA
Pipe dimensions (diameter x wall thickness)	e.g. 32 x 2,0
SDR series	e.g. SDR 17
Material	PE100
Core pipe pressure rating (bar)	e.g. PN10
Intended application (W- potable water)	W
Date of production	date

Material: **PE100**

Pressure class: **PN16 / PN10**

SDR series: **11 / 17**

Open product