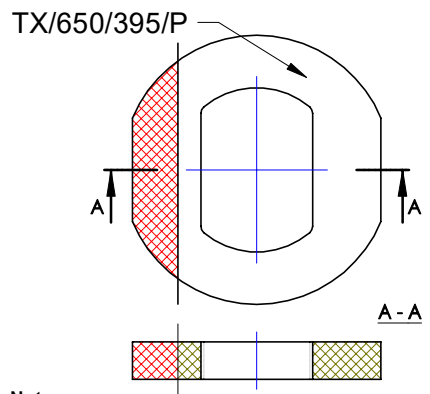
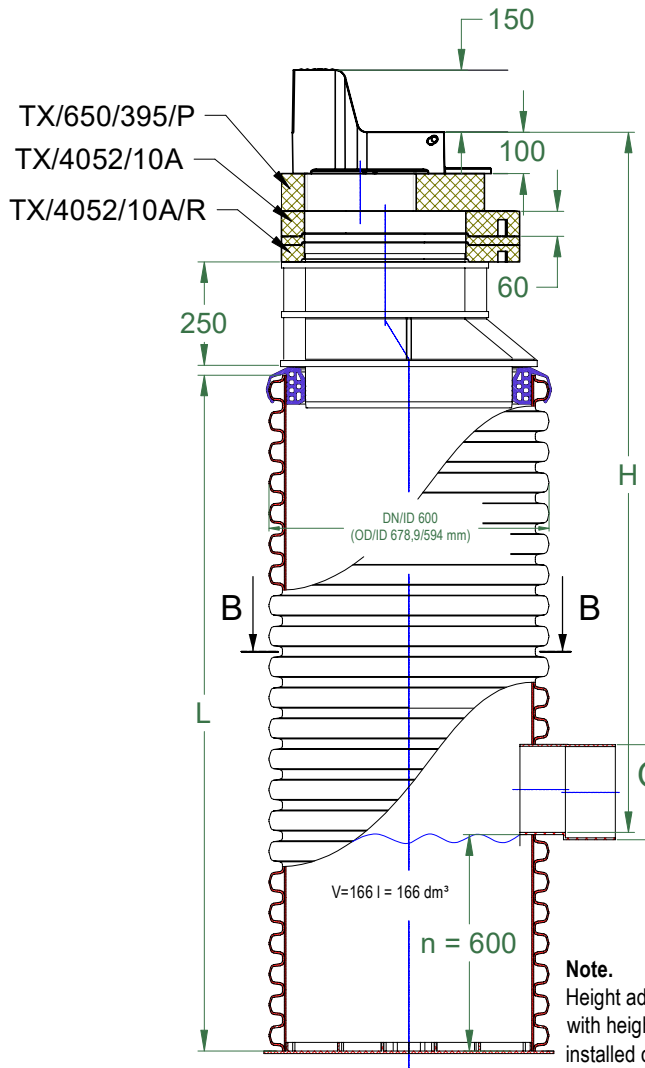
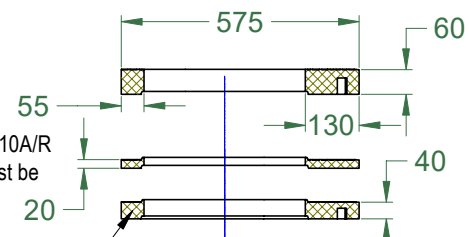
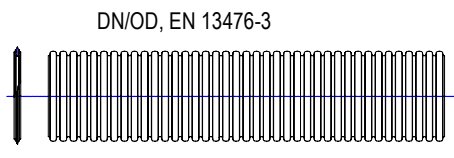


DRAWING No.:	VERSION	REVISION	REVISION STATUS
Board grate D400 gully ID 600 mm	EN	1	ACTUAL

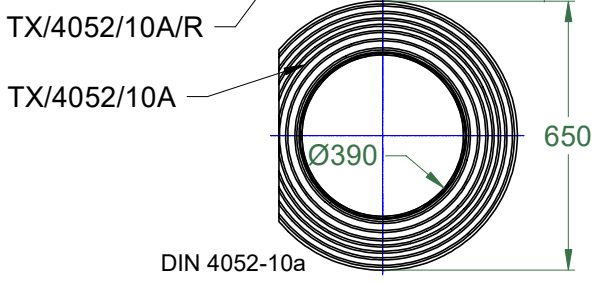
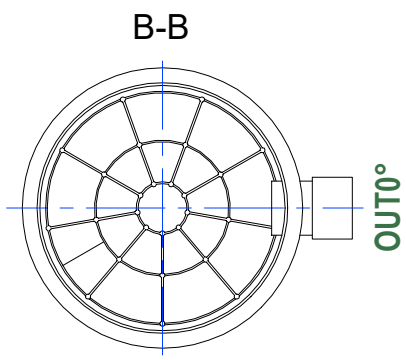
DN/ID 600 mm gully with D400 board grate



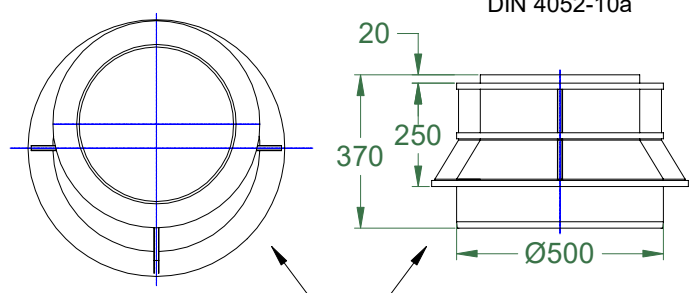
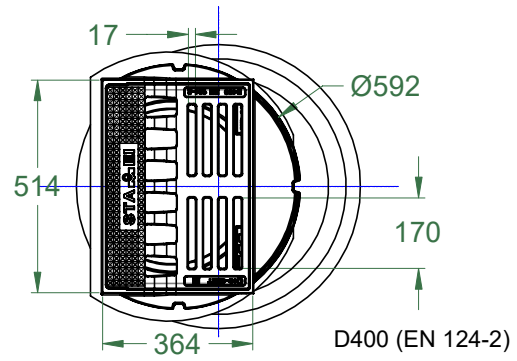
Note.
The cut on the polymer support ring TX/650/395/P must be done at the construction site.



Note.
Height adjustment ring TX/4052/10A/R with height of 20 and 40 mm must be installed only if necessary.



DN110, 160, 200, 250, 315, 400 mm



Note.
Concrete must be filled around the gully adapter (full height).



SIA "EVOPIPES"
Langervaldes str. 2a, Jelgava, LV-3002, Latvia
Company reg. No.: 50003728871
Phone: +371 63094300
E-mail: info@evopipes.lv
Website: www.evopipes.lv

FILE NAME:
Board grate D400 gully ID 600 mm

SHEET: 1 OF 1

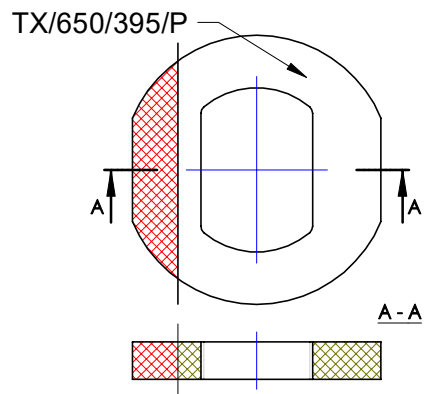
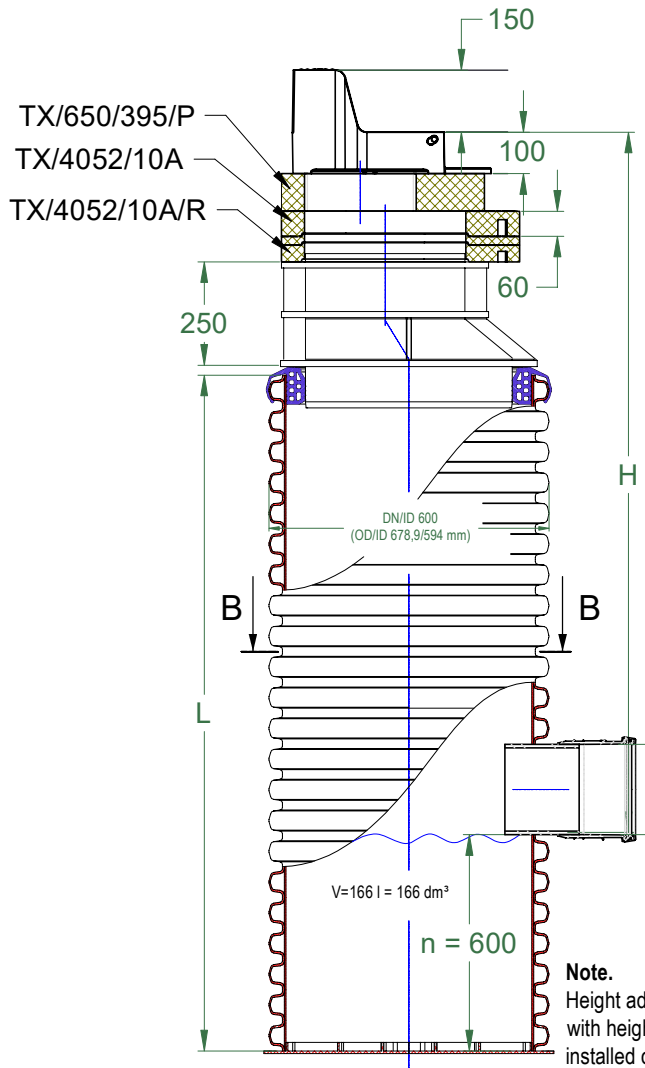
SHEET FORMAT: @ A4

SCALE:
WITHOUT SCALE

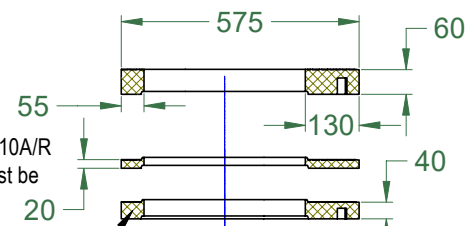
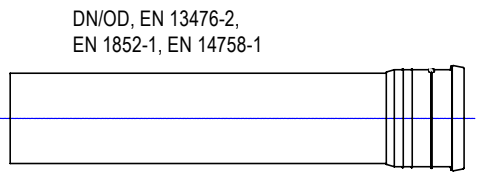
STAGE:
STANDARD DRAWING

DRAWING No.:	VERSION	REVISION	REVISION STATUS
Board grate D400 gully ID 600 mm	EN	1	ACTUAL

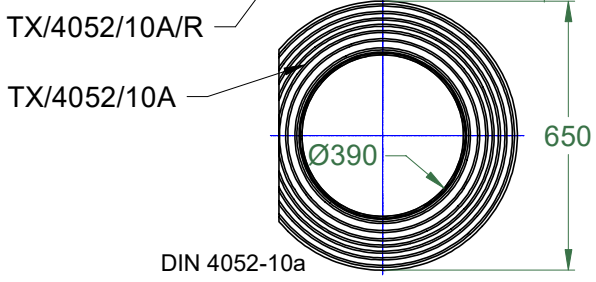
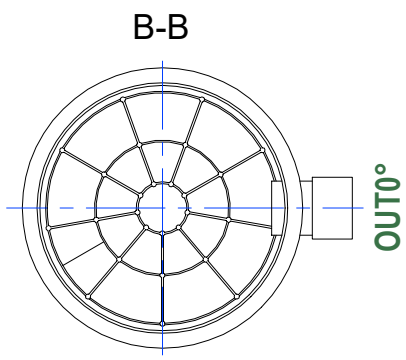
DN/ID 600 mm gully with D400 board grate



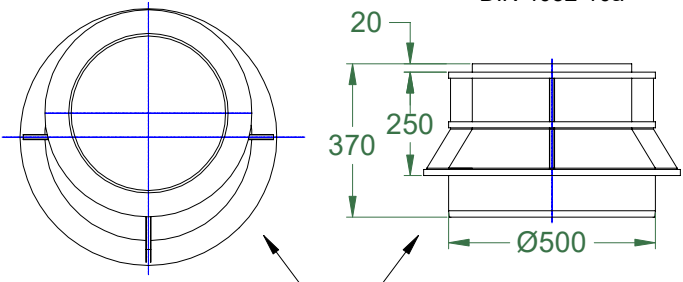
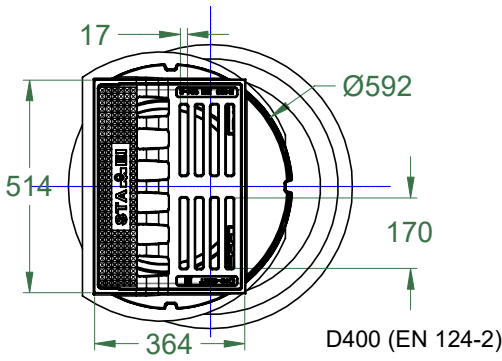
Note.
The cut on the polymer support ring TX/650/395/P must be done at the construction site.



Note.
Height adjustment ring TX/4052/10A/R with height of 20 and 40 mm must be installed only if necessary.



DN110, 160, 200, 250, 315, 400 mm



Note.
Concrete must be filled around the gully adapter (full height).



SIA "EVOPIPES"
Langervaldes str. 2a, Jelgava, LV-3002, Latvia
Company reg. No.: 50003728871
Phone: +371 63094300
E-mail: info@evopipes.lv
Website: www.evopipes.lv

FILE NAME:
Board grate D400 gully ID 600 mm

SHEET: 1 OF 1

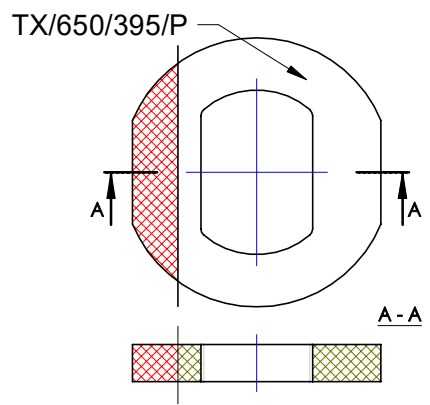
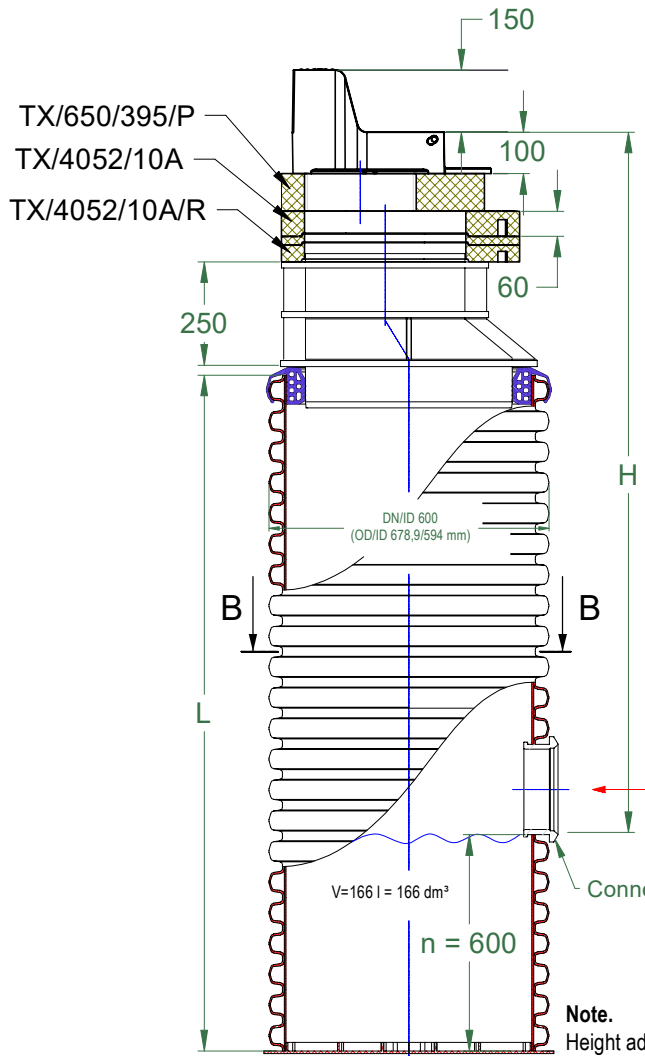
SHEET FORMAT: @ A4

SCALE:
WITHOUT SCALE

STAGE:
STANDARD DRAWING

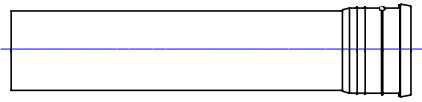
DRAWING No.:	VERSION	REVISION	REVISION STATUS
Board grate D400 gully ID 600 mm	EN	1	ACTUAL

DN/ID 600 mm gully with D400 board grate

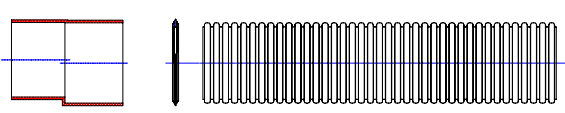


Note.
The cut on the polymer support ring TX/650/395/P must be done at the construction site.

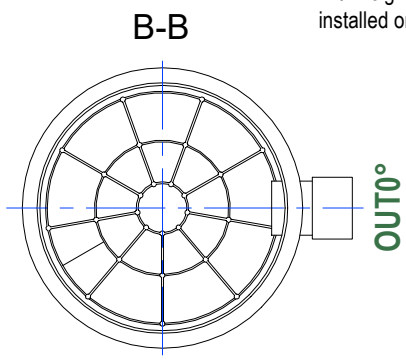
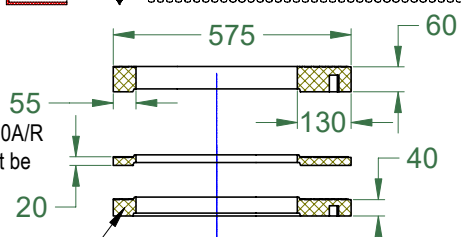
DN/OD, EN 13476-2,
EN 1852-1, EN 14758-1



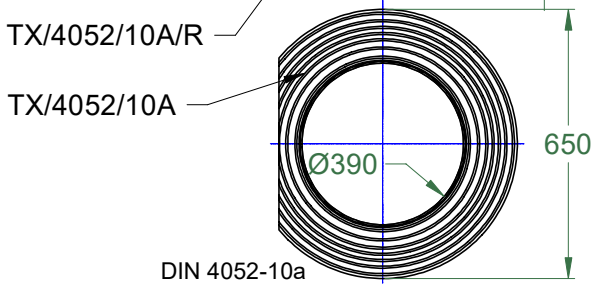
DN/OD, EN 13476-3



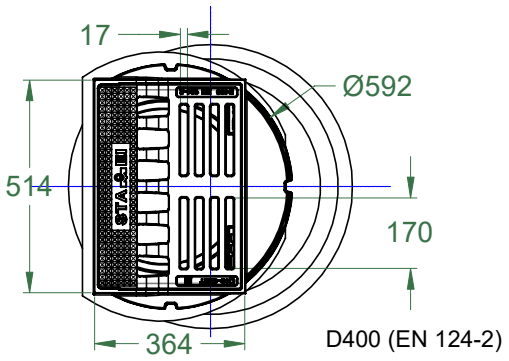
Note.
Height adjustment ring TX/4052/10A/R with height of 20 and 40 mm must be installed only if necessary.



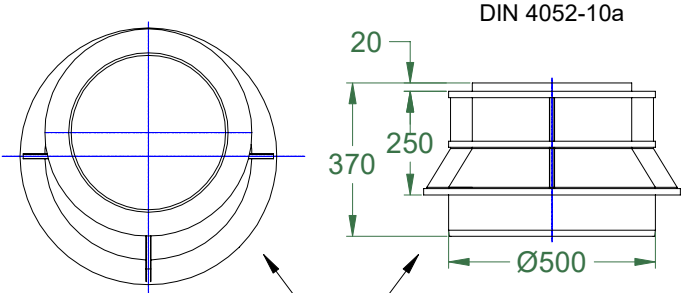
DN110, 160, 200, 250, 315, 400 mm



DIN 4052-10a



D400 (EN 124-2)



Note.
Concrete must be filled around the gully adapter (full height).



SIA "EVOPIPES"
Langervaldes str. 2a, Jelgava, LV-3002, Latvia
Company reg. No.: 50003728871
Phone: +371 63094300
E-mail: info@evopipes.lv
Website: www.evopipes.lv

FILE NAME:
Board grate D400 gully ID 600 mm

SHEET: 1 OF 1

SHEET FORMAT: @ A4

SCALE:
WITHOUT SCALE

STAGE:
STANDARD DRAWING