

TECHNICAL DATA SHEET



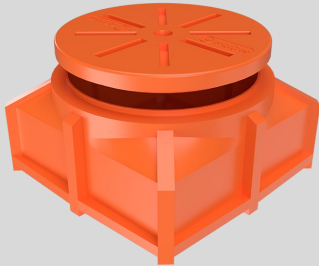
EVO TC 900/700/450

Optical cable connection chamber

PRODUCT DESCRIPTION

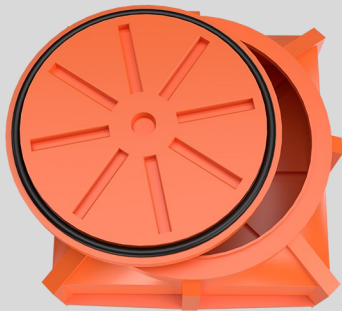
Optical cable connection chamber TC 900/700/450 with watertight PE cover is made of polyethylene (PE) which provides high resistance to corrosion and chemical substances. Supplied cover is equipped with rubber sealing. Large inside diameter of 700 mm provides optimal service space. Horizontal and vertical ribs stabilise chamber in soil and increase it's mechanical strength. Chamber is available in orange, black, green or any other colour on demand.

Material: PE (Polyethylene), load bearing capacity $\geq 15\text{kN}$.



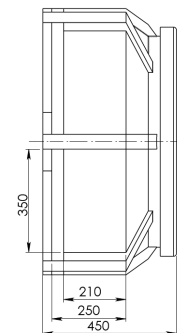
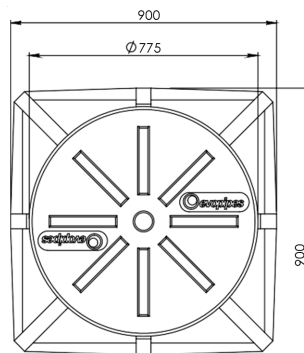
APPLICATION AREA

Chamber can be used for underground cable connections of telecommunications networks, optical cable lines, railway signal lines. Chamber can be installed in pedestrian and cycling zones or green areas (with no traffic).



PRODUCT DIMENSIONS

Outside dimensions, mm	900 x 900
Inside ID, mm	700
Height, mm	450



Load bearing capacity:

$\geq 15\text{kN}$

Open product

PRODUCT PARAMETERS

Parameter	Value
Material	PE
Weight, kg	21.5
Load bearing capacity, kN	15