



# SPIGOT FLANGE ADAPTOR CHAMFERED SDR 11



water  
16 bar



gas  
10 bar



hydrogen  
10 bar



PE 100-RC  
material



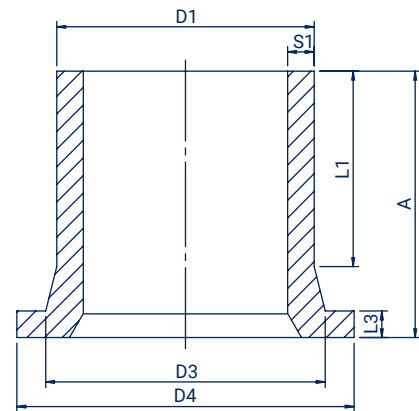
10 MPa



butt  
welding



electrofusion  
welding



Size D1 (mm)	Code	D4 (mm)	D3 (mm)	A (mm)	L1 (mm)	L3 (mm)	S1 (mm)	Weight (kg)	Packing
110	TK11011C	154	121	155	111	20	10	0,67	12
140	TK14011C	189	155	174	126	26	12,7	1,28	12
160	TK16011C	209	165	206	154	26	14,6	1,78	12
180	TK18011C	212	182	176	152	21	16,4	1,74	12
200	TK20011C	268	234	187	133	33	18,2	2,81	5
225	TK22511C	269	236	185	130	33	20,5	2,90	4
250	TK25011C	321	286	216	140	36	22,7	4,65	6
280	TK28011C	323	293	231	185	36	25,4	5,63	6
315	TK31511C	371	337	237	165	36	28,6	7,49	2



# SPIGOT FLANGE ADAPTOR CHAMFERED SDR 17



water  
10 bar



gas  
5 bar



hydrogen  
5 bar



PE 100-RC  
material



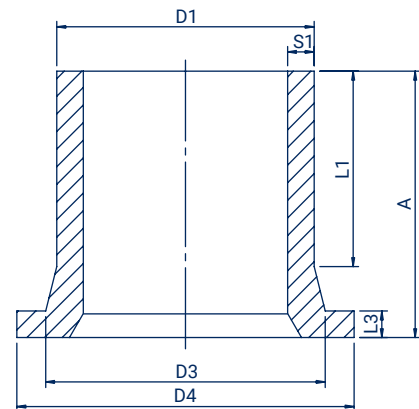
10 MPa



butt  
welding



electrofusion  
welding



Size D1 (mm)	Code	D4 (mm)	D3 (mm)	A (mm)	L1 (mm)	L3 (mm)	S1 (mm)	Weight (kg)	Packing
200	TK20017C	269	233	187	132	33	11,9	2,31	5
225	TK22517C	269	236	190	131	33	13,4	2,22	4
250	TK25017C	321	286	217	137	36	14,8	3,97	6
280	TK28017C	322	292	228	143	36	16,6	3,94	6
315	TK31517C	371,5	336	238	156	36	18,7	5,25	2